



## pVHL (ABT-PVHL) mouse mAb

<b>Catalog No</b>	YP-Ab-15297
<b>Isotype</b>	IgG
<b>Reactivity</b>	Human
<b>Applications</b>	IHC;IF
<b>Gene Name</b>	VHL
<b>Protein Name</b>	Von Hippel-Lindau disease tumor suppressor (Protein G7) (pVHL)
<b>Immunogen</b>	Synthesized peptide derived from human pVHL
<b>Specificity</b>	This antibody detects endogenous levels of human pVHL. Heat-induced epitope retrieval (HIER) TRIS-EDTA of pH8.0 was highly recommended as antigen repair method in paraffin section
<b>Formulation</b>	Liquid in PBS containing 50% glycerol, 0.5% BSA and 0.02% sodium azide.
<b>Source</b>	Mouse, Monoclonal/IgG2b, Kappa
<b>Purification</b>	The antibody was affinity-purified from mouse ascites by affinity-chromatography using specific immunogen.
<b>Dilution</b>	IHC-p 1:100-500. IF 1:50-200
<b>Concentration</b>	1 mg/ml
<b>Purity</b>	≥90%
<b>Storage Stability</b>	-20°C/1 year
<b>Synonyms</b>	
<b>Observed Band</b>	19-24kD
<b>Cell Pathway</b>	[Isoform 1]: Cytoplasm. Membrane; Peripheral membrane protein. Nucleus. Found predominantly in the cytoplasm and with less amounts nuclear or membrane-associated. Colocalizes with ADRB2 at the cell membrane.; [Isoform 3]: Cytoplasm. Nucleus. Equally distributed between the nucleus and the cytoplasm but not membrane-associated.
<b>Tissue Specificity</b>	Expressed in the adult and fetal brain and kidney.
<b>Function</b>	disease:Defects in VHL are a cause of pheochromocytoma [MIM:171300]. The pheochromocytomas are catecholamine-producing, chromaffin tumors that arise in the adrenal medulla in 90% of cases. In the remaining 10% of cases, they develop in extra-adrenal sympathetic ganglia and may be referred to as "paraganglioma." Pheochromocytoma usually presents with hypertension. Approximately 10% of pheochromocytoma is hereditary. The genetic basis for most cases of non-syndromic familial pheochromocytoma is unknown..disease:Defects in VHL are a cause of renal cell carcinoma type 1 (RCC1) [MIM:144700]; also called hypernephroma or adenocarcinoma of kidney. Familial renal cell carcinoma syndromes form a group of diseases characterized by a predisposition to development of renal cell carcinomas (RCCs) with various

histological subtypes.,disease:Defects in VHL are the cause of erythrocytosis familial type

**Background**

von Hippel-Lindau tumor suppressor(VHL) Homo sapiens Von Hippel-Lindau syndrome (VHL) is a dominantly inherited familial cancer syndrome predisposing to a variety of malignant and benign tumors. A germline mutation of this gene is the basis of familial inheritance of VHL syndrome. The protein encoded by this gene is a component of the protein complex that includes elongin B, elongin C, and cullin-2, and possesses ubiquitin ligase E3 activity. This protein is involved in the ubiquitination and degradation of hypoxia-inducible-factor (HIF), which is a transcription factor that plays a central role in the regulation of gene expression by oxygen. RNA polymerase II subunit POLR2G/RPB7 is also reported to be a target of this protein. Alternatively spliced transcript variants encoding distinct isoforms have been observed. [provided by RefSeq, Jul 2008],

**matters needing attention**

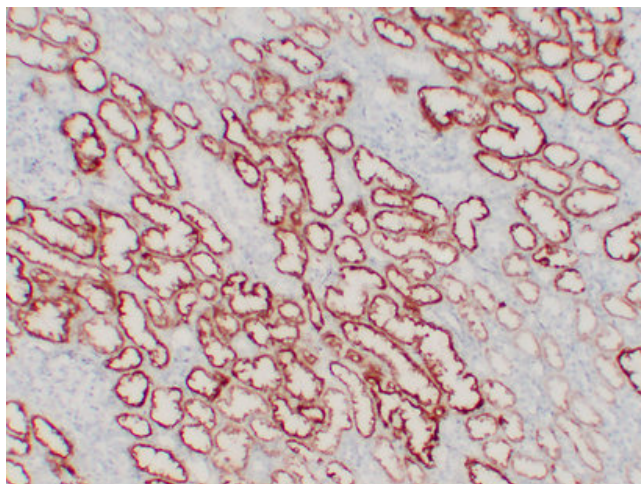
Avoid repeated freezing and thawing!

**Usage suggestions**

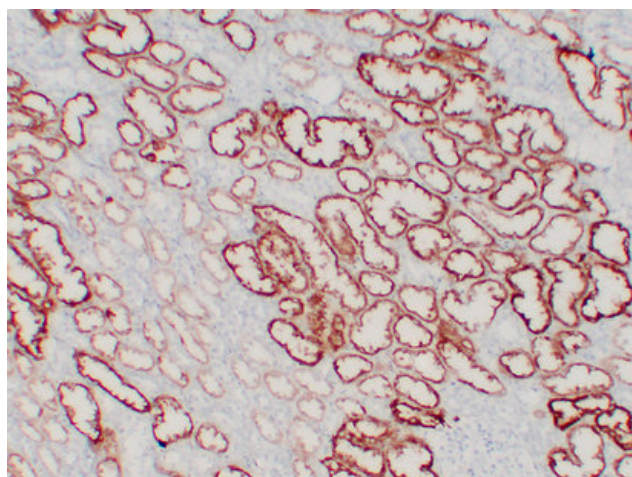
This product can be used in immunological reaction related experiments. For more information, please consult technical personnel.



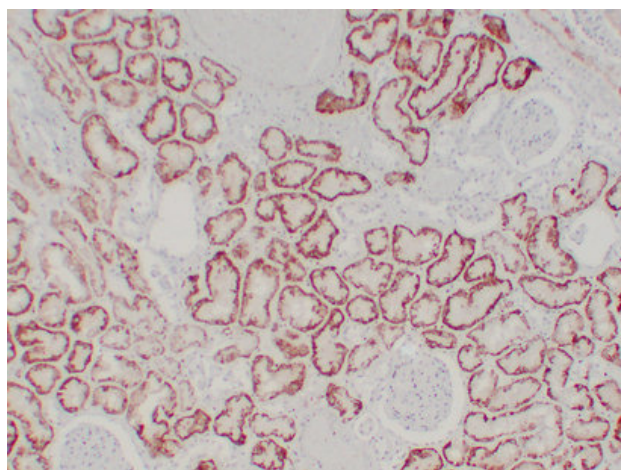
## Products Images



Immunohistochemical analysis of paraffin-embedded Kidney. 1, Antibody was diluted at 1:200(4° overnight). 2, Tris-EDTA,pH8.0 was used for antigen retrieval. 3,Secondary antibody was diluted at 1:200(room temperature, 30min).

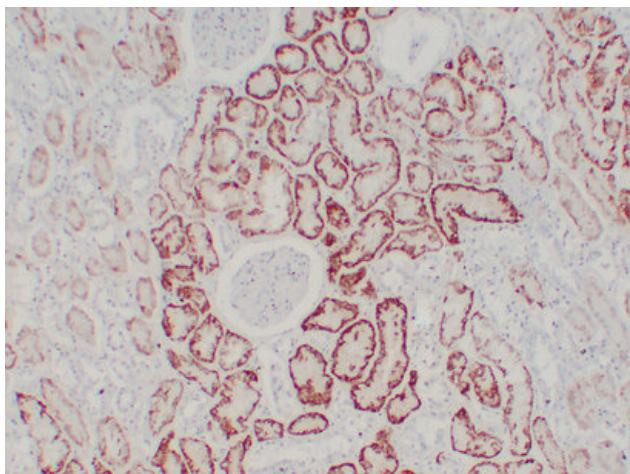


Immunohistochemical analysis of paraffin-embedded Kidney. 1, Antibody was diluted at 1:200(4° overnight). 2, Tris-EDTA,pH8.0 was used for antigen retrieval. 3,Secondary antibody was diluted at 1:200(room temperature, 30min).

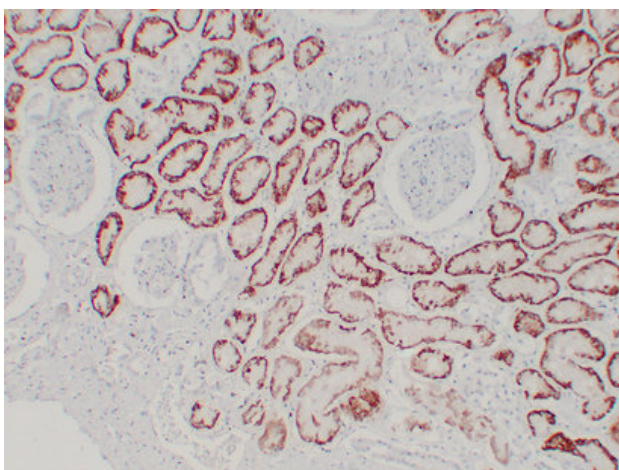


Immunohistochemical analysis of paraffin-embedded Kidney. 1, Antibody was diluted at 1:200(4° overnight). 2, Tris-EDTA,pH8.0 was used for antigen retrieval. 3,Secondary antibody was diluted at 1:200(room temperature, 30min).





Immunohistochemical analysis of paraffin-embedded Kidney. 1, Antibody was diluted at 1:200(4° overnight).  
2, Tris-EDTA, pH8.0 was used for antigen retrieval.  
3, Secondary antibody was diluted at 1:200(room temperature, 30min).



Immunohistochemical analysis of paraffin-embedded Kidney. 1, Antibody was diluted at 1:200(4° overnight).  
2, Tris-EDTA, pH8.0 was used for antigen retrieval.  
3, Secondary antibody was diluted at 1:200(room temperature, 30min).